

K8



SUPAPANEL®



Shaft Systems

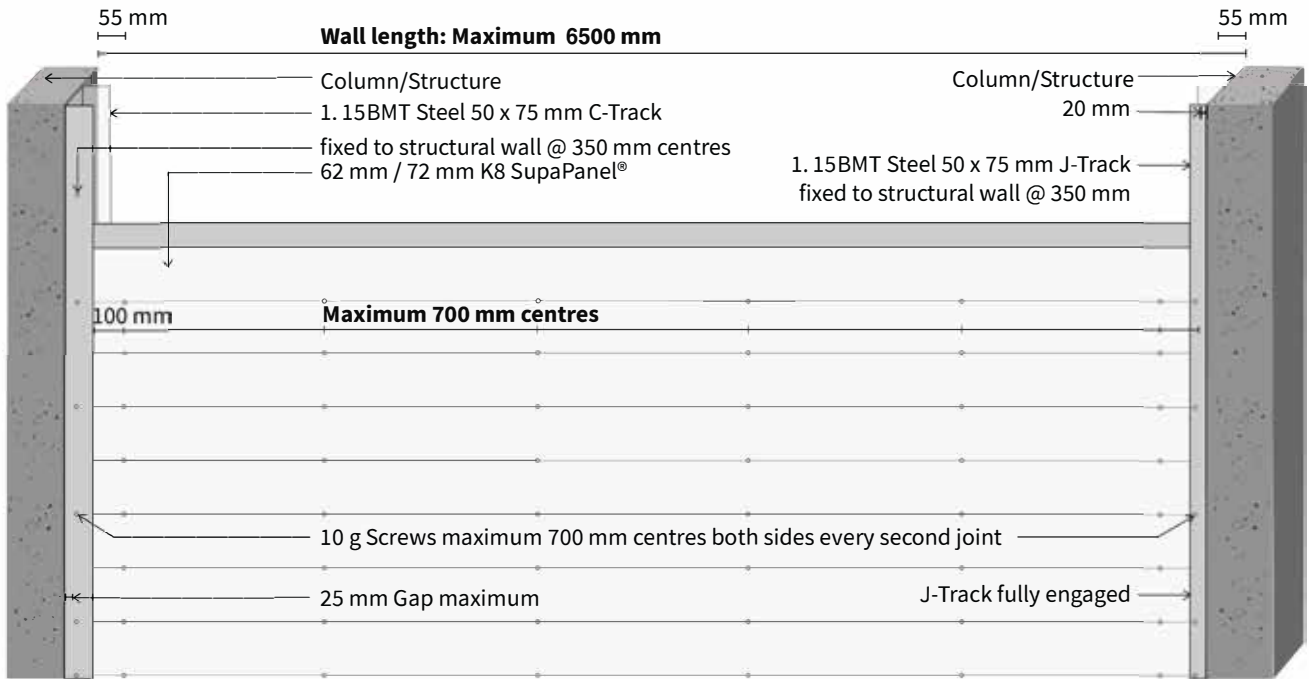


the next generation of aerated panels



2.0 SHAFT CONSTRUCTION

72mm -/120/120



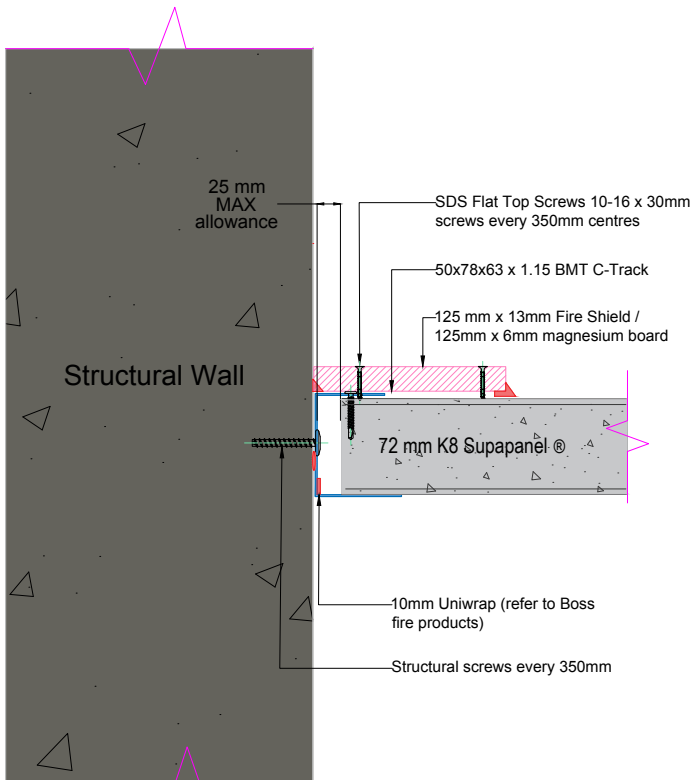
72MM SHAFT JOINT

-/120/120

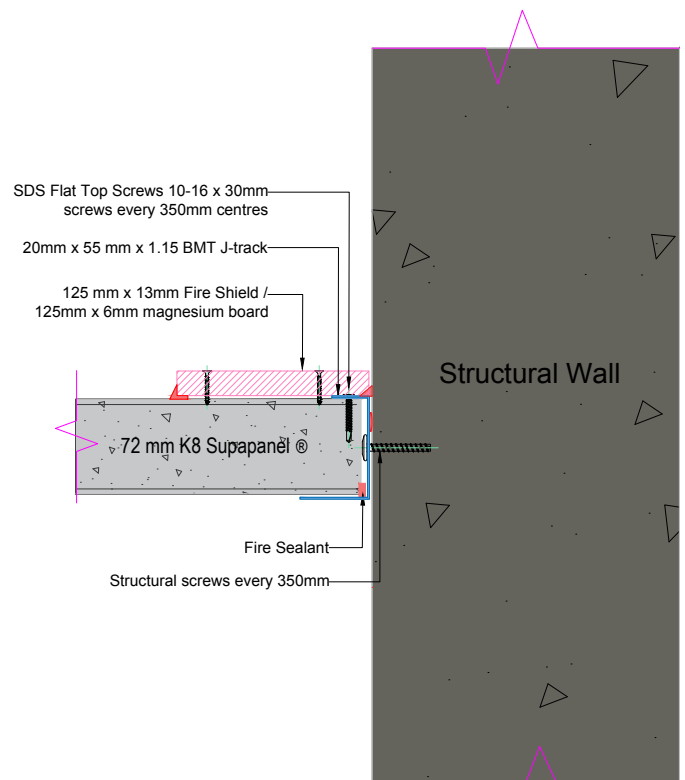
72MM SHAFT JOINT

-/120/120

HORIZONTAL K8 SUPAPANEL SYSTEM



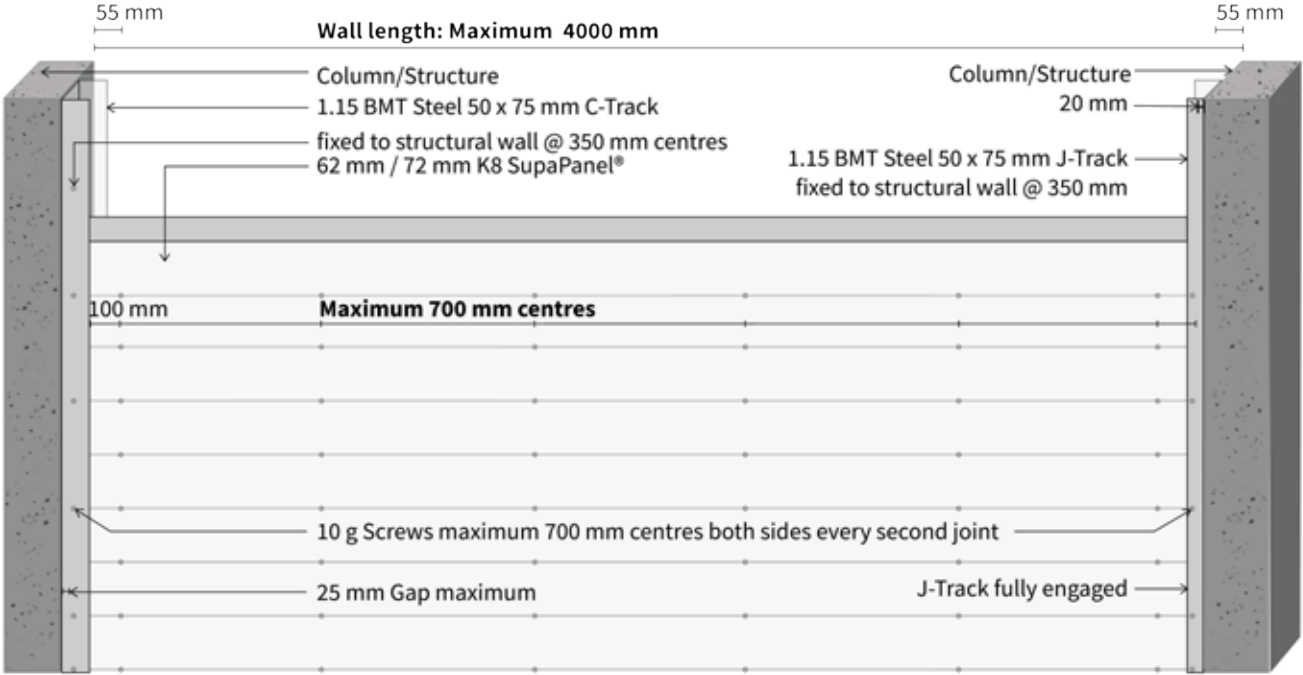
** 25 MM GAP ALLOWANCE IN THE TOP TRACK **



** J TRACK IS FULLY ENGAGED **

2.0 SHAFT CONSTRUCTION

62mm -/180/90
SEALED JOINTS



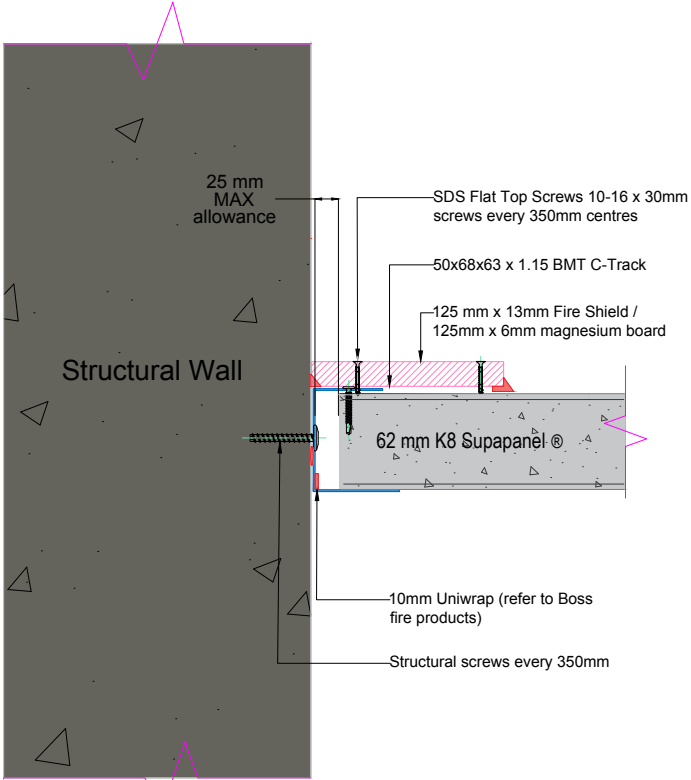
62MM SHAFT JOINT

-/180/90
SEALED JOINTS

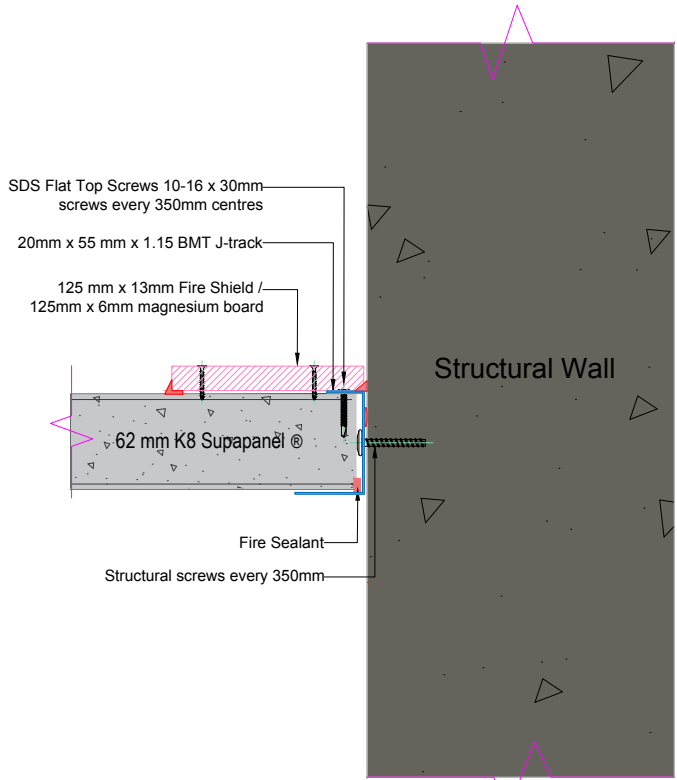
62MM SHAFT JOINT

-/180/90
SEALED JOINTS

HORIZONTAL K8 SUPAPANEL SYSTEM



** 25 MM GAP ALLOWANCE IN THE TOP TRACK **

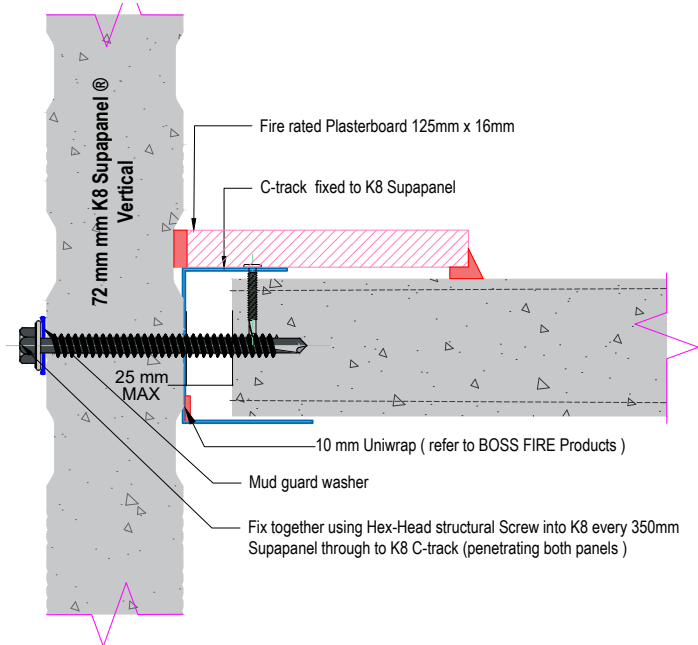


** J TRACK IS FULLY ENGAGED **

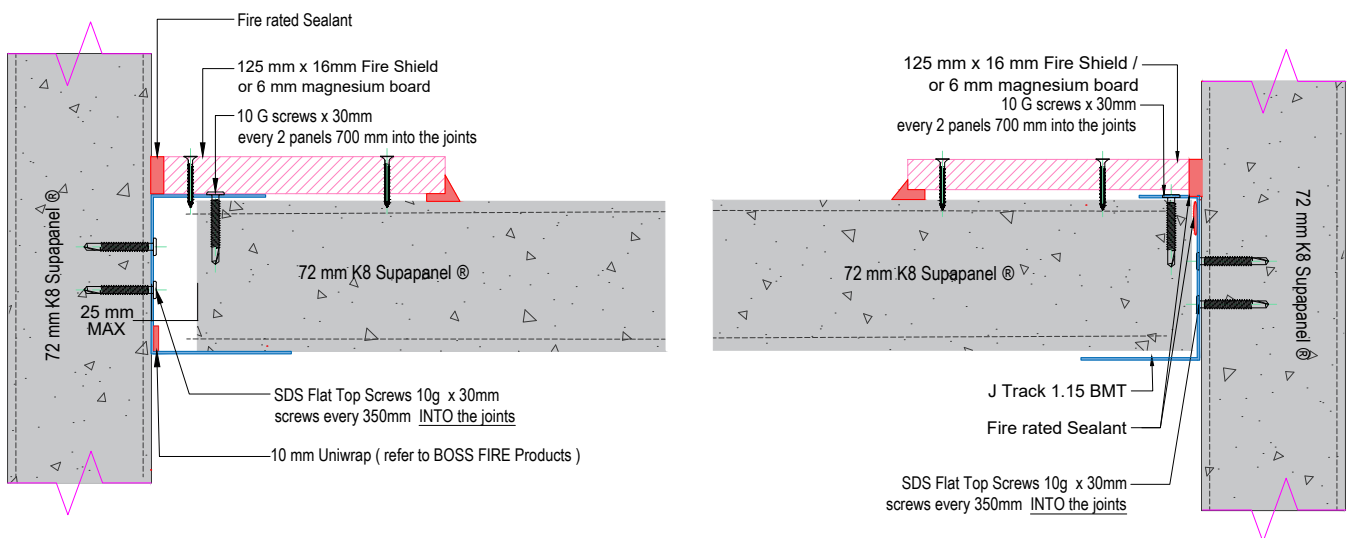
2.1 FULL SHAFT CONSTRUCTION WITH SUPAPANEL

72mm -/120/120

VERTICAL TO HORIZONTAL TYPICAL DETAILS



HORIZONTAL TO HORIZONTAL TYPICAL DETAILS



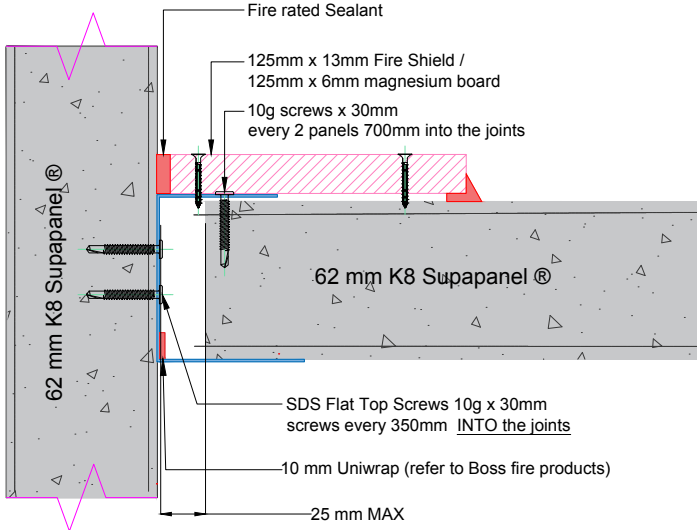
62MM SHAFT JOINT

-/180/90
SEALED JOINTS

62MM SHAFT JOINT

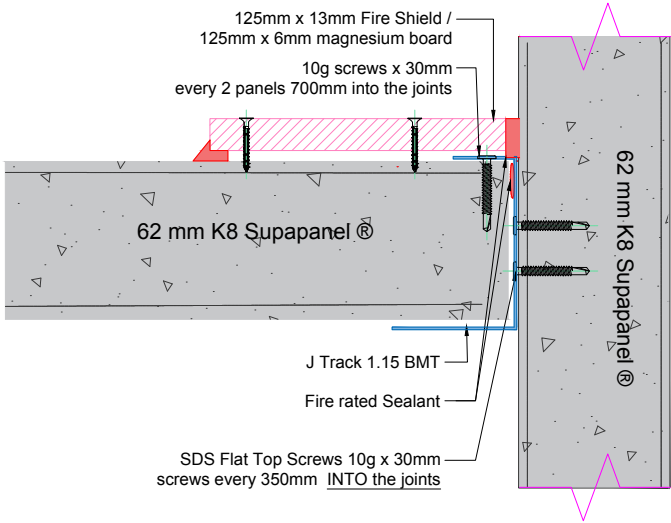
-/180/90
SEALED JOINTS

C-TRACK SYSTEM



** 25 MM GAP ALLOWANCE IN THE TOP TRACK **

J-TRACK SYSTEM



** J TRACK IS FULLY ENGAGED **

2.2 HANGING SHAFT CONSTRUCTION TO STRUCTURAL WALL

OPTIONS

